
Thumb Screws

Catalog Pages 72 – 85

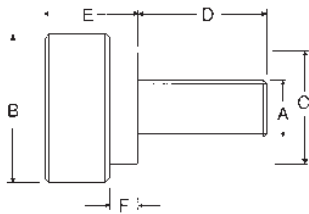


651-353-6891
www.idsmachine.com

Precision Thumb Screws with shoulder



- Precision thumb screw for a wide variety of applications
- 303 stainless steel or carbon steel with black oxide finish
- Diamond knurl on head
- Shoulder provides an excellent bearing surface
- Inch and metric sizes available

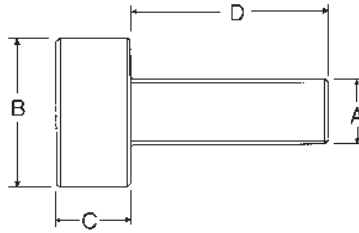


		INCH					
Steel PART #	Stainless Steel PART #	Thread A	B	C	D	E	F
3101	4101	4-40	3/8	1/4	1/4	3/16	3/32
3102	4102	4-40	3/8	1/4	3/8	3/16	3/32
3202	4202	6-32	7/16	3/8	7/16	5/16	3/32
3204	4204	6-32	7/16	3/8	9/16	5/16	3/32
3205	4205	8-32	7/16	3/8	5/16	5/16	3/32
3206	4206	8-32	7/16	3/8	3/8	5/16	3/32
3207	4207	8-32	7/16	3/8	7/16	5/16	3/32
3208	4208	8-32	7/16	3/8	1/2	5/16	3/32
3209	4209	8-32	7/16	3/8	9/16	5/16	3/32
3301	4301	8-32	1/2	3/8	5/16	5/16	3/32
3302	4302	8-32	1/2	3/8	3/8	5/16	3/32
3303	4303	8-32	1/2	3/8	7/16	5/16	3/32
3304	4304	8-32	1/2	3/8	1/2	5/16	3/32
3305	4305	8-32	1/2	3/8	5/8	5/16	3/32
3401	4401	10-32	1/2	3/8	5/16	5/16	3/32
3402	4402	10-32	1/2	3/8	3/8	5/16	3/32
3403	4403	10-32	1/2	3/8	7/16	5/16	3/32
3404	4404	10-32	1/2	3/8	1/2	5/16	3/32
3405	4405	10-32	1/2	3/8	9/16	5/16	3/32
3406	4406	10-32	1/2	3/8	5/8	5/16	3/32
3407	4407	1/4-20	1/2	3/8	1/2	3/8	1/8
3408	4408	1/4-20	1/2	3/8	5/8	3/8	1/8
3409	4409	1/4-20	1/2	3/8	3/4	3/8	1/8
3412	4412	1/4-20	1/2	3/8	1"	3/8	1/8

		METRIC				
Stainless Steel PART #	Thread A	B	C	D	E	F
4601	M3x.5	9.5mm	6.4mm	8mm	7.9mm	2.3mm
4602	M3x.5	9.5	6.4	11	7.9	2.3
4603	M3.5	9.5	6.4	9	7.9	2.3
4604	M3.5	9.5	6.4	13	7.9	2.3
4605	M4	11.1	9.5	9	7.9	2.3
4606	M4	11.1	9.5	13	7.9	2.3
4607	M5	11.1	9.5	9	7.9	2.3
4608	M5	11.1	9.5	16	7.9	2.3
4609	M6	12.7	9.5	9	9.5	3.2
4610	M6	12.7	9.5	13	9.5	3.2
4611	M6	12.7	9.5	19	9.5	3.2

Stainless Steel Thumb Screws

- ▶ 303 stainless steel
- ▶ Diamond knurl
- ▶ Inch and metric sizes available

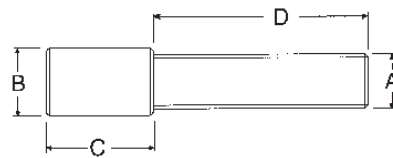
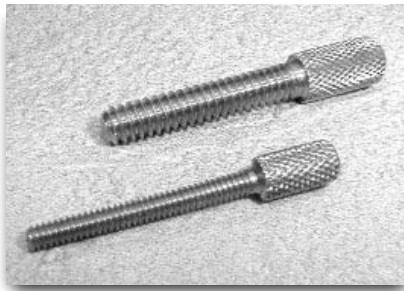


PART #	A	INCH D	B	C
4113	4-40	5/16	5/16	3/16
4114	4-40	3/8	5/16	3/16
4119	4-40	1/2	5/16	3/16
4124	6-32	3/8	5/16	3/16
4127	6-32	1/2	5/16	3/16
4128	6-32	3/8	3/8	3/16
4224	8-32	5/8	3/8	3/16
4226	8-32	3/4	3/8	3/16
4358	10-32	3/8	7/16	3/16
4361	10-32	1/2	7/16	3/16
4362	10-32	5/8	7/16	3/16
4363	10-32	3/4	7/16	3/16
4414	1/4-20	1	3/4	3/16
4416	1/4-20	1-1/4	3/4	3/16
4418	1/4-20	1-1/2	3/4	3/16
4420	1/4-20	2	3/4	3/16
4428	1/4-20	2	1	3/16

PART #	Thread	METRIC D	B	C
4111	M3	8mm	8mm	5mm
4115	M3	9	8	5
41195	M3	11	8	5
4123	M3	13	8	5
41275	M3.5	8	8	5
4131	M3.5	9	8	5
4135	M3.5	11	8	5
4139	M3.5	13	8	5
4143	M4	9	9.5	5
4147	M4	11	9.5	5
4151	M4	13	9.5	5
4155	M4	14	9.5	5
4159	M4	16	9.5	5
4163	M5	9	11.5	5
4167	M5	11	11.5	5
4171	M5	13	11.5	5
4175	M5	14	11.5	5
4179	M5	16	11.5	5
4183	M6	13	13	6
4187	M6	14	13	6
4191	M6	16	13	6
4195	M6	18	13	6
4199	M6	19	13	6



Precision Stainless Steel Thumb Screws



- Made from 303 stainless steel
- Diamond knurl on head
- Longer head length than standard thumb screw
- Inch and metric sizes available

PART #	A	INCH D	B	C
4112	4-40	1/2	1/4	1/2
4118	4-40	1"	3/16	3/8
4120	6-32	3/4	3/16	3/8
4122	6-32	1"	3/16	3/8
4125	6-32	1-1/4	3/16	3/8
4219	8-32	1/2	3/16	3/8
4220	8-32	3/4	3/16	3/8
4228	8-32	1"	3/16	3/8
4231	8-32	1-1/4	3/16	3/8
4310	10-24	1/2	1/4	1/2
4311	10-24	3/4	1/4	1/2
4326	10-24	1"	1/4	1/2
4327	10-24	1-1/4	1/4	1/2
4359	10-32	1/2	1/4	1/2
4360	10-32	3/4	1/4	1/2
4374	10-32	1"	1/4	1/2
4375	10-32	1-1/4	1/4	1/2
4410	1/4-20	1/2	5/16	1/2
4411	1/4-20	3/4	5/16	1/2
4413	1/4-20	1"	5/16	1/2
4414	1/4-20	1-1/4	5/16	1/2

PART #	A	METRIC D	B	C
4501	M3.5	19	4.8	9.5
4502	M3.5	25	4.8	9.5
4503	M3.5	31	4.8	9.5
4504	M4x.7	19	4.8	9.5
4505	M4x.7	25	4.8	9.5
4506	M4x.7	31	4.8	9.5
4507	M5	19	6.4	12.7
4508	M5	25	6.4	12.7
4509	M5	31	6.4	12.7
4510	M6	19	8	12.7
4511	M6	25	8	12.7
4512	M6	31	8	12.7



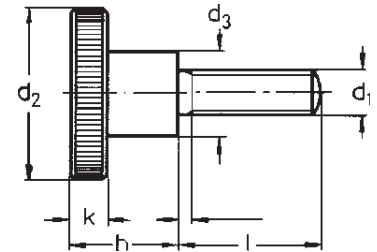
Knurled Thumb Screws


INCH SIZES

PART #	Stainless Steel PART #	d ₂	Thread	Thread Lgth	d ₃	h	k
KK-2531	KK-2531SS	1	1/4-20	5/16	1/2	5/8	1/4
KK-2537	KK-2537SS	1	1/4-20	3/8	1/2	5/8	1/4
KK-2550	KK-2550SS	1	1/4-20	1/2	1/2	5/8	1/4
KK-2562	KK-2562SS	1	1/4-20	5/8	1/2	5/8	1/4
KK-2575	KK-2575SS	1	1/4-20	3/4	1/2	5/8	1/4
KK-2510	KK-2510SS	1	1/4-20	1	1/2	5/8	1/4
KK-3150	KK-3150SS	1-1/4	5/16-18	1/2	5/8	3/4	1/4
KK-3162	KK-3162SS	1-1/4	5/16-18	5/8	5/8	3/4	1/4
KK-3175	KK-3175SS	1-1/4	5/16-18	3/4	5/8	3/4	1/4
KK-3110	KK-3110SS	1-1/4	5/16-18	1	5/8	3/4	1/4
KK-3112	KK-3112SS	1-1/4	5/16-18	1-1/4	5/8	3/4	1/4
KK-3115	KK-3115SS	1-1/4	5/16-18	1-1/2	5/8	3/4	1/4
KK-3762	KK-3762SS	1-3/8	3/8-16	5/8	3/4	1	5/16
KK-3775	KK-3775SS	1-3/8	3/8-16	3/4	3/4	1	5/16
KK-3710	KK-3710SS	1-3/8	3/8-16	1	3/4	1	5/16
KK-3712	KK-3712SS	1-3/8	3/8-16	1-1/4	3/4	1	5/16
KK-3715	KK-3715SS	1-3/8	3/8-16	1-1/2	3/4	1	5/16

METRIC SIZES

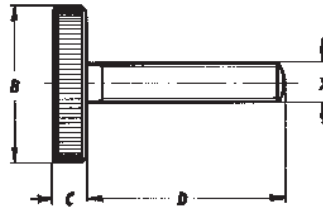
PART #	Stainless Steel PART #	d ₂	Thread	Thread Lgth	d ₃	h	k
361203006		12mm	M3	6mm	6mm	7.5mm	2.5mm
361203010		12	M3	10	6	7.5	2.5
361203012		12	M3	12	6	7.5	2.5
361203016		12	M3	16	6	7.5	2.5
361604005		16	M4	5	8	9.5	3.5
361604008	361604008SS	16	M4	8	8	9.5	3.5
361604010	361604010SS	16	M4	10	8	9.5	3.5
361604012	361604012SS	16	M4	12	8	9.5	3.5
361604016	361604016SS	16	M4	16	8	9.5	3.5
361604020		16	M4	20	8	9.5	3.5
361604025		16	M4	25	8	9.5	3.5
362005006		20	M5	6	10	11.5	4
362005008		20	M5	8	10	11.5	4
362005010	362005010SS	20	M5	10	10	11.5	4
362005012	362005012SS	20	M5	12	10	11.5	4
362005016	362005016SS	20	M5	16	10	11.5	4
362005020	362005020SS	20	M5	20	10	11.5	4
362406008		24	M6	8	12	16	5
362406010		24	M6	10	12	16	5
362406012	362406012SS	24	M6	12	12	16	5
362406016	362406016SS	24	M6	16	12	16	5
362406020	362406020SS	24	M6	20	12	16	5
362406025		24	M6	25	12	16	5
363008012		30	M8	12	16	18	6
363008016	363008016SS	30	M8	16	16	18	6
363008020	363008020SS	30	M8	20	16	18	6
363008025		30	M8	25	16	18	6
363008030	363008030SS	30	M8	30	16	18	6
363008040		30	M8	40	16	18	6
363610016		36	M10	16	20	23	8
363610020		36	M10	20	20	23	8
363610025		36	M10	25	20	23	8
363610030		36	M10	30	20	23	8
363610040		36	M10	40	20	23	8



- ▶ Inch and metric sizes available
- ▶ Available in steel and stainless steel
- ▶ Solid one piece construction
- ▶ Straight knurl

Thumb Screws

metric



- Carbon steel, black oxide finish
- Straight knurl
- Large head diameter

PART #	X Thread	Thread Lgth D	B	C
521203006	M3	6mm	12mm	2.5mm
521203010	M3	10	12	2.5
521203016	M3	16	12	2.5
521604008	M4	8	16	3.5
521604010	M4	10	16	3.5
521604012	M4	12	16	3.5
521604016	M4	16	16	3.5
521604020	M4	20	16	3.5
522005010	M5	10	20	4
522005012	M5	12	20	4
522005016	M5	16	20	4
522005020	M5	20	20	4
522406012	M6	12	24	5
522406016	M6	16	24	5
522406020	M6	20	24	5
522406030	M6	30	24	5
522406040	M6	40	24	5
523008016	M8	16	30	6
523008020	M8	20	30	6
523008025	M8	25	30	6
523008030	M8	30	30	6
523008040	M8	40	30	6
523610020	M10	20	36	8
523610025	M10	25	36	8
523610030	M10	30	36	8
523610040	M10	40	36	8



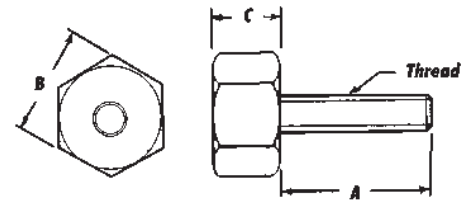
Made to print specials can be quoted per your requests.
 Delivery time for special tooling components averages
 2 to 4 weeks from time of order.

Hex Head Thumb Screws

- ▶ Available in carbon steel (black oxide finish), or 300 series stainless steel
- ▶ Hex head allows the opportunity for increased torque



PART #	Stainless Steel		Thread	A	B	C
	PART #	PART #				
HTS-11	HTS-11SS		4-40	1/2	5/16	1/4
HTS-12	HTS-12SS		4-40	1/2	3/8	1/4
HTS-13	HTS-13SS		6-32	1/2	5/16	1/4
HTS-14	HTS-14SS		6-32	1/2	3/8	1/4
HTS-15	HTS-15SS		8-32	1/2	3/8	1/4
HTS-16	HTS-16SS		8-32	5/8	3/8	1/4
HTS-17	HTS-17SS		8-32	3/4	3/8	1/4
HTS-18	HTS-18SS		10-24	1/2	3/8	1/4
HTS-19	HTS-19SS		10-24	5/8	3/8	1/4
HTS-20	HTS-20SS		10-24	3/4	1/2	3/8
HTS-21	HTS-21SS		10-32	1/2	3/8	1/4
HTS-22	HTS-22SS		10-32	5/8	3/8	1/4
HTS-23	HTS-23SS		10-32	5/8	1/2	3/8
HTS-24	HTS-24SS		10-32	3/4	1/2	3/8
HTS-25	HTS-25SS		1/4-20	5/8	1/2	3/8
HTS-26	HTS-26SS		1/4-20	3/4	1/2	3/8
HTS-27	HTS-27SS		1/4-20	3/4	5/8	7/16
HTS-28	HTS-28SS		1/4-20	1	5/8	7/16
HTS-29	HTS-29SS		1/4-20	1-1/4	5/8	7/16

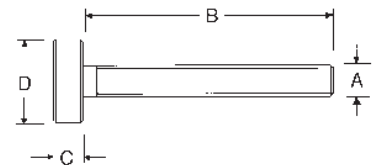


Long Style Thumb Screws

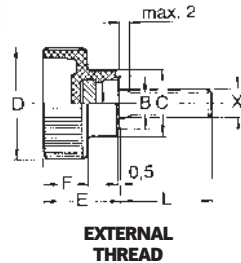
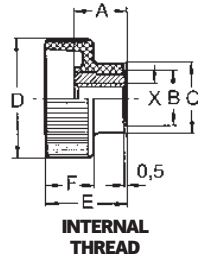
- ▶ Available in carbon steel (black oxide finish), or 300 series stainless steel
- ▶ Long style thread, diamond knurl head



PART #	Stainless Steel		A Thread	B	C	D
	PART #	PART #				
4010	4010-SS		10-32	1-1/2	3/16	5/8
4011	4011-SS		10-32	2	3/16	5/8
4012	4012-SS		10-24	1-1/2	3/16	5/8
4013	4013-SS		10-24	2	3/16	5/8
4014	4014-SS		1/4-20	1-1/2	7/32	11/16
4015	4015-SS		1/4-20	2-1/2	7/32	11/16
4016	4016-SS		5/16-18	1-3/4	1/4	3/4
4017	4017-SS		5/16-18	2-1/4	1/4	3/4
4018	4018-SS		5/16-18	3	1/4	3/4
4019	4019-SS		3/8-16	2	5/16	7/8
4020	4020-SS		3/8-16	2-1/2	5/16	7/8
4021	4021-SS		3/8-16	3	5/16	7/8
4022	4022-SS		1/2-13	3	3/8	1



Plastic Head Thumb Screws



- Plastic knob (black)
- Bushing from brass and screw made from steel with a zinc-plated finish
- Stainless steel available upon request

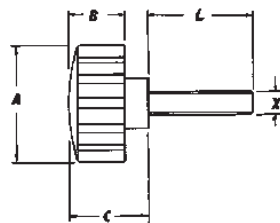
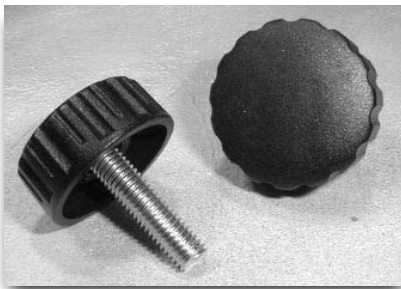
INCH - INTERNAL THREAD							
PART #	X	A	B	C	D	E	F
TS-100	10-32	.35	.25	.47	.75	.55	.32
TS-101	10-24	.35	.25	.47	.75	.55	.32
TS-102	1/4-20	.41	.43	.55	.94	.64	.37
TS-103	5/16-18	.45	.51	.63	1.18	.76	.43
TS-104	3/8-16	.55	.59	.71	1.42	.88	.49

METRIC - INTERNAL THREAD							
PART #	X	A	B	C	D	E	F
TS-04	M4	9mm	9mm	12mm	20mm	14mm	8mm
TS-05	M5	9	9	12	20	14	8
TS-06	M6	10.5	11	14	25	16.5	9.5
TS-08	M8	11.5	13	16	30	19.5	11
TS-10	M10	14	15	18	35	22.5	12.5

INCH - EXTERNAL THREAD							
PART #	X	A	B	C	D	E	F
TS-301	10-32	.39	.25	.47	.75	.55	.32
TS-302	10-32	.78	.25	.47	.75	.55	.32
TS-303	10-24	.59	.25	.47	.75	.55	.32
TS-304	10-24	.78	.25	.47	.75	.55	.32
TS-305	1/4-20	.78	.43	.55	.94	.64	.37
TS-306	1/4-20	1.18	.43	.55	.94	.64	.37
TS-307	5/16-18	.78	.51	.63	1.18	.76	.43
TS-308	5/16-18	1.18	.51	.63	1.18	.76	.43
TS-309	5/16-18	1.57	.51	.63	1.18	.76	.43
TS-310	3/8-16	.78	.59	.71	1.42	.88	.49
TS-311	3/8-16	1.18	.59	.71	1.42	.88	.49
TS-312	3/8-16	1.57	.59	.71	1.42	.88	.49

METRIC - EXTERNAL THREAD							
PART #	X	L	B	C	D	E	F
TS-420	M4	20mm	9mm	12mm	20mm	14mm	8mm
TS-515	M5	15	9	12	20	14	8
TS-620	M6	20	11	14	25	16.5	9.5
TS-630	M6	30	11	14	25	16.5	9.5
TS-820	M8	20	13	16	30	19.5	11
TS-830	M8	30	13	16	30	19.5	11
TS-840	M8	40	13	16	30	19.5	11
TS-1020	M10	20	15	18	35	22.5	12.5
TS-1030	M10	30	15	18	35	22.5	12.5
TS-1040	M10	40	15	18	35	22.5	12.5

Plastic Head Thumb Screws



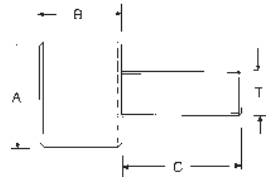
- Black polyimide handle
- Zinc plated steel screw

INCH					
PART #	Thread	L	A	B	C
8640AC016	1/4-20	.47	1.57	.75	1.06
8640AC021	1/4-20	.71	1.57	.75	1.06
8640AC031	1/4-20	1.22	1.57	.75	1.06
8640AD021	5/16-18	.83	1.57	.75	1.06
8640AD031	5/16-18	1.22	1.57	.75	1.06

METRIC					
PART #	Thread	L	A	B	C
864006021	M6	21mm	40mm	19mm	27mm
864006031	M6	31	40	19	27
864008021	M8	21	40	19	27
864008031	M8	32	40	19	27

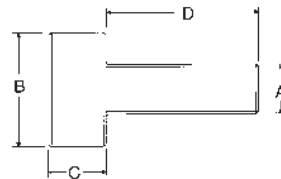
- ▶ Available in carbon steel with black oxide finish or 300 series stainless steel
- ▶ Extra large head with straight knurl
- ▶ One piece construction

PART #	Stainless Steel PART #	A	B	C	Thread
PS-10	PS-10SS	5/8	1/2	1/2	1/4-20
PS-20	PS-20SS	5/8	1/2	3/4	1/4-20
PS-30	PS-30SS	3/4	9/16	3/4	5/16-18
PS-40	PS-40SS	3/4	9/16	1"	5/16-18
PS-50	PS-50SS	7/8	11/16	3/4	3/8-16
PS-60	PS-60SS	7/8	11/16	1"	3/8-16
PS-70	PS-70SS	1"	13/16	3/4	1/2-13
PS-80	PS-80SS	1"	13/16	1"	1/2-13



- ▶ Machined from Nylatron
- ▶ High strength and rigidity
- ▶ Superior heat resistance
- ▶ Diamond knurl on head

PART #	A Thread	D	B	C
4701	6-32	3/8	3/8	1/8
4702	6-32	1/2	3/8	1/8
4703	8-32	3/8	3/8	3/16
4704	8-32	1/2	3/8	3/16
4705	8-32	3/4	3/8	3/16
4706	10-24	1/2	3/8	3/16
4707	10-24	3/4	1/2	3/16
4708	10-24	3/4	3/4	3/16
4709	10-32	1/2	3/8	3/16
4710	10-32	3/4	1/2	3/16
4711	10-32	3/4	3/4	3/16
4712	10-32	1"	3/4	3/16
4713	1/4-20	3/4	1/2	3/16
4714	1/4-20	3/4	3/4	3/16
4715	1/4-20	1"	3/4	3/16



Nylon Thumb Screws



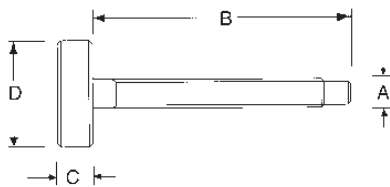
Quick Release Ball Lock Pins are now available from Morton on pages 48-52. We offer four handle designs...

- ▶ T-Handle
- ▶ L-Handle
- ▶ Ring Handle
- ▶ Button Handle

All pins are available in both 4130 Steel and 304 Stainless Steel. High quality fastening lock pins at low prices!



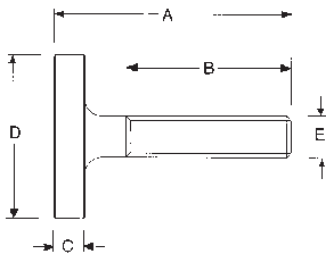
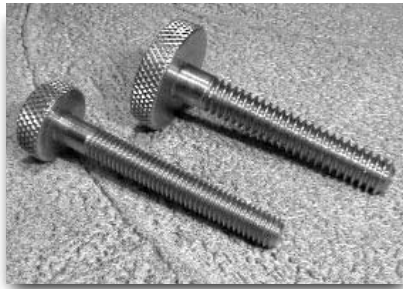
Knurled Head Adjusting Screws



- Available in carbon steel (black oxide finish) or 300 series stainless steel
- Two piece construction
- Straight knurl

Low Carbon Steel PART #	Stainless Steel PART #	Thread A	B	C	D
KHS0-4	KHS0-4SS	10-32	3/4	5/16	3/4
KHS0-3	KHS0-3SS	10-32	1-1/4	5/16	3/4
KHS0-5	KHS0-5SS	10-32	1-3/4	5/16	3/4
KHS0-1	KHS0-1SS	10-24	1-1/4	5/16	3/4
KHS0-2	KHS0-2SS	10-24	1-5/8	5/16	3/4
KHS0	KHS0SS	10-24	2	5/16	3/4
KHS1-0	KHS1-0SS	1/4-20	1	5/16	1
KHS1-1	KHS1-1SS	1/4-20	1-1/2	5/16	1
KHS1-2	KHS1-2SS	1/4-20	2	5/16	1
KHS1	KHS1SS	1/4-20	2-1/2	5/16	1
KHS2-0	KHS2-0SS	5/16-18	1	3/8	1-1/8
KHS2-1	KHS2-1SS	5/16-18	1-1/2	3/8	1-1/8
KHS2-3	KHS2-3SS	5/16-18	1-3/4	3/8	1-1/8
KHS2-2	KHS2-2SS	5/16-18	2-1/4	3/8	1-1/8
KHS2-4	KHS2-4SS	5/16-18	2-3/4	3/8	1-1/8
KHS2	KHS2SS	5/16-18	3	3/8	1-1/8
KHS3-0	KHS3-0SS	3/8-16	1-1/2	7/16	1-1/4
KHS3-1	KHS3-1SS	3/8-16	2	7/16	1-1/4
KHS3-2	KHS3-2SS	3/8-16	2-1/2	7/16	1-1/4
KHS3	KHS3SS	3/8-16	3	7/16	1-1/4
KHS3-3	KHS3-3SS	3/8-16	3-1/2	7/16	1-1/4
KHS3-4	KHS3-4SS	3/8-16	4	7/16	1-1/4
KHS4-1	KHS4-1SS	1/2-13	2-1/2	1/2	1-1/4
KHS4-0	KHS4-0SS	1/2-13	2-3/4	1/2	1-1/4
KHS4-2	KHS4-2SS	1/2-13	3	1/2	1-1/4
KHS4	KHS4SS	1/2-13	3-1/2	1/2	1-1/4

Stainless Steel Knurled Head Screws



- Machined from 303 stainless steel
- One piece construction
- Oversized head, straight knurl

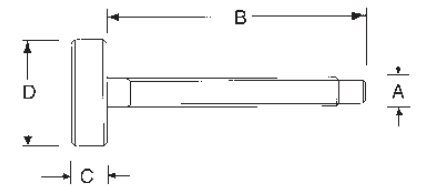
PART #	A	B	C	D	E Thread
8251	1	7/16	1/2	1/4	#4-40
8252	1-1/4	5/8	1/2	1/4	#4-40
82505	1-1/2	3/4	1/2	1/4	#4-40
8253	1/2	5/16	1/8	3/8	#4-40
8254	5/8	7/16	1/8	3/8	#4-40
8255	1	7/16	1/2	1/4	#6-32
8256	1-1/4	5/8	1/2	1/4	#6-32
8257	1-1/2	13/16	1/2	1/4	#6-32
8258	1/2	5/16	1/8	3/8	#6-32
8259	5/8	3/8	1/8	3/8	#6-32
8260	1	7/16	1/2	1/4	#8-32
8261	1-1/4	5/8	1/2	1/4	#8-32
8262	1-1/2	13/16	1/2	1/4	#8-32
8263	1/2	5/16	1/8	3/8	#8-32
8264	5/8	3/8	1/8	3/8	#8-32
8266	15/16	5/8	3/16	3/8	#10-24
8267	1-3/16	13/16	3/16	3/8	#10-24
8268	1-7/16	1	3/16	3/8	#10-24
8269	15/16	5/8	3/16	1/2	#10-24
8270	1-3/16	13/16	3/16	1/2	#10-24
8271	1-7/16	1	3/16	1/2	#10-24
8273	15/16	5/8	3/16	3/4	#10-24
8274	1-3/16	13/16	3/16	3/4	#10-24
8275	1-7/16	1	3/16	3/4	#10-24
8276	1-11/16	1-1/4	3/16	3/4	#10-24
8277	11/16	7/16	3/16	3/8	#10-32
8280	1-7/16	1	3/16	3/8	#10-32
8281	15/16	5/8	3/16	1/2	#10-32
8282	1-3/16	13/16	3/16	1/2	#10-32
8283	1-7/16	1	3/16	1/2	#10-32
8284	1-11/16	1-1/4	3/16	1/2	#10-32
8285	15/16	5/8	3/16	3/4	#10-32
8286	1-3/16	13/16	3/16	3/4	#10-32
8287	1-7/16	1	3/16	3/4	#10-32
8289	15/16	5/8	3/16	3/4	1/4-20
8290	1-3/16	13/16	3/16	3/4	1/4-20
8291	1-7/16	1	3/16	3/4	1/4-20
8292	1-11/16	1-1/4	3/16	3/4	1/4-20
8299	1-13/16	1-3/8	3/16	3/4	1/4-20
8293	2-3/16	1-5/8	3/16	3/4	1/4-20
8294	15/16	5/8	3/16	1	1/4-20
8295	1-3/16	13/16	3/16	1	1/4-20
8296	1-7/16	1	3/16	1	1/4-20
8297	1-11/16	1-1/4	3/16	1	1/4-20
8298	2-3/16	1-5/8	3/16	1	1/4-20

Knurled Head Adjusting Screws metric

- ▶ Carbon steel, black oxide finish
- ▶ Two-piece construction
- ▶ Straight knurl



PART #	Thread				Tip Dia.	Tip Lgth.
	A	B	C	D		
KHS-80	M4	1-1/2	1/4	3/4	5/64	1/8
KHS-81	M4	2	1/4	3/4	5/64	1/8
KHS-82	M6	1-1/2	5/16	1	3/16	1/8
KHS-83	M6	2	5/16	1	3/16	1/8
KHS-84	M6	2-1/2	5/16	1	3/16	1/8
KHS-85	M8	1-1/2	3/8	1-1/8	1/4	3/16
KHS-86	M8	2	3/8	1-1/8	1/4	3/16
KHS-87	M8	2-1/2	3/8	1-1/8	1/4	3/16
KHS-88	M10	2	7/16	1-1/4	9/32	3/16
KHS-89	M10	2-1/2	7/16	1-1/4	9/32	3/16
KHS-90	M10	3	7/16	1-1/4	9/32	3/16
KHS-91	M12	3	1/2	1-1/4	25/32	1/4

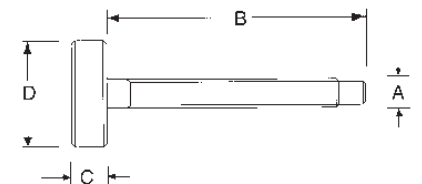


Stainless Steel Knurled Head Adjusting Screws metric

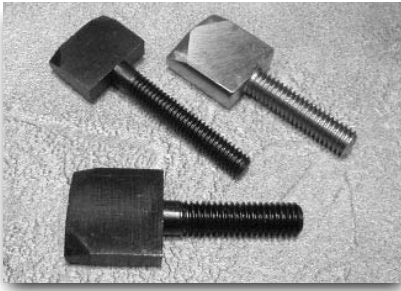
- ▶ 300 series stainless steel
- ▶ Two-piece construction
- ▶ Straight knurl



PART #	Thread				Tip Dia.	Tip Lgth.
	A	B	D	C		
KHS-51SS	M4	1-1/4	3/4	5/16	.079	.118
KHS-52SS	M4	1-5/8	3/4	5/16	.079	.118
KHS-53SS	M4	2	3/4	5/16	.079	.118
KHS-54SS	M6	1	1	5/16	.170	.118
KHS-55SS	M6	1-1/2	1	5/16	.170	.118
KHS-56SS	M6	2	1	5/16	.170	.118
KHS-57SS	M6	2-1/2	1	5/16	.170	.118
KHS-58SS	M8	1	1-1/8	3/8	.236	.170
KHS-59SS	M8	1-1/2	1-1/8	3/8	.236	.170
KHS-60SS	M8	1-3/4	1-1/8	3/8	.236	.170
KHS-61SS	M8	2-1/4	1-1/8	3/8	.236	.170
KHS-62SS	M8	2-3/4	1-1/8	3/8	.236	.170
KHS-63SS	M8	3	1-1/8	3/8	.236	.170
KHS-64SS	M10	1-1/2	1-1/4	7/16	.276	.170
KHS-65SS	M10	2	1-1/4	7/16	.276	.170
KHS-66SS	M10	2-1/2	1-1/4	7/16	.276	.170
KHS-67SS	M10	3	1-1/4	7/16	.276	.170
KHS-68SS	M10	3-1/2	1-1/4	7/16	.276	.170
KHS-69SS	M10	4	1-1/4	7/16	.276	.170
KHS-70SS	M12	2-1/2	1-1/4	1/2	.394	.250
KHS-71SS	M12	2-3/4	1-1/4	1/2	.394	.250
KHS-72SS	M12	3	1-1/4	1/2	.394	.250
KHS-73SS	M12	3-1/2	1-1/4	1/2	.394	.250

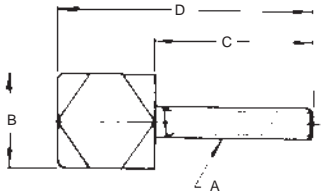


Quarter Turn Screws



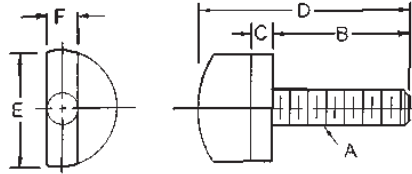
► Available hardened or unhardened black oxide finish, carbon steel

Not hardened Low Carbon Steel PART #	Hardened Low Carbon Steel PART #	Stainless Steel PART #	Thread A	B	C	D
QT-0	QT-10	QT-0SS	#10-32	1/2	1	1-1/2
QT-1	QT-11	QT-1SS	1/4-20	3/4	1-1/4	1-7/8
QT-2	QT-12	QT-2SS	5/16-18	1"	1-1/2	2-1/4
QT-3	QT-13	QT-3SS	3/8-16	1"	1-1/2	2-1/2
QT-4	QT-14	QT-4SS	1/2-13	1-1/4	1-3/4	2-3/4



Long Style			Thread A	B	C	D
LQT-0	LQT10	-	#10-32	1/2	1-1/2	2
LQT-1	LQT-11	-	1/4-20	3/4	1-3/4	2-3/8
LQT-2	LQT-12	-	5/16-18	1	2	2-3/4
LQT-3	LQT-13	-	3/8-16	1	2	3
LQT-4	LQT-14	-	1/2-13	1-1/4	2-1/4	3-1/4

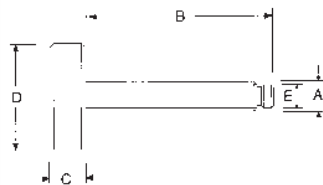
Half Turn Screws



- Carbon steel, black oxide finish
- Applications include using as locking tool for leaf and jig plates

PART #	Thread A	B	C	D	E	F
HTS-510	10-32	1	3/16	1-11/16	3/4	3/16
HTS-525	1/4-20	1-1/4	3/16	2	3/4	1/4
HTS-531	5/16-18	1-1/4	3/16	2-1/16	1	5/16
HTS-537	3/8-16	1-3/4	1/4	2-11/16	1-1/16	3/8
HTS-550	1/2-13	1-3/4	1/4	2-3/4	1-1/4	1/2

Knurled Head Toggle Screws

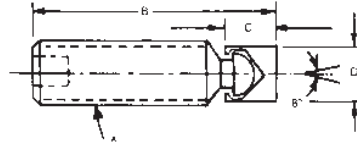


- Heat treated steel, black oxide finish
- Three piece construction
- Pad swivels to allow for uniform clamping pressure

PART #	Thread A	B	C	D	E
KHT-10	1/4-20	1-1/2	5/16	1"	.185
KHT-11	1/4-20	2"	5/16	1"	.185
KHT-12	5/16-18	1-1/2	3/8	1-1/8	.245
KHT-13	5/16-18	2"	3/8	1-1/8	.245
KHT-14	5/16-18	2-1/2	3/8	1-1/8	.245
KHT-15	3/8-16	1-1/2	7/16	1-1/4	.297
KHT-17	3/8-16	2-1/2	7/16	1-1/4	.297
KHT-18	3/8-16	3"	7/16	1-1/4	.297
KHT-20	1/2-13	2"	1/2	1-1/4	.405
KHT-22	1/2-13	3"	1/2	1-1/4	.405

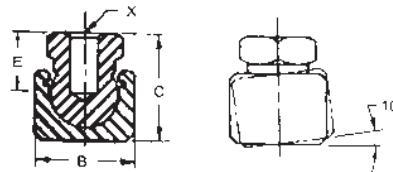
Hex Socket Toggle Screws

PART #	Thread	B	C	D
	A			
HST-2507	1/4-20	3/4	3/16	.185
HST-2510	1/4-20	1	3/16	.185
HST-3112	5/16-18	1-1/4	15/64	.240
HST-3115	5/16-18	1-1/2	15/64	.240
HST-3707	3/8-16	3/4	9/32	.293
HST-3715	3/8-16	1-1/2	9/32	.293
HST-3720	3/8-16	2	9/32	.293
HST-5020	1/2-13	2	3/8	.400
HST-5025	1/2-13	2-1/2	3/8	.400
HST-6220	5/8-11	2	7/16	.506
HST-6230	5/8-11	3	7/16	.506
HST-7525	3/4-10	2-1/2	13/32	.625
HST-7530	3/4-10	3	13/32	.625
HST-7535	3/4-10	3-1/2	13/32	.625



- ▶ Heat treated steel, black oxide finish
- ▶ Pad swivels 8° in any direction for clamping on uneven surfaces
- ▶ Hex socket for clamping in confined area

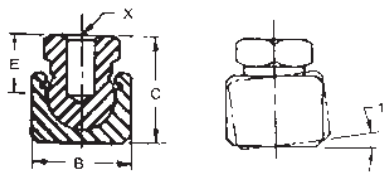
- ▶ Zinc-plated steel
- ▶ Available with steel pad or delrin pad
- ▶ 10 degree swivel
- ▶ Do not exceed load rating



Toggle Pads

Steel Pad PART #	Delrin Pad PART #	Thread X	B	C	E	Steel Lbs. Load	Delrin Lbs. Load
BTP-1	BTP-10	1/4-20	1/2	5/8	5/16	3900	360
BTP-2	BTP-20	5/16-18	9/16	3/4	3/8	5900	360
BTP-3	BTP-30	3/8-16	5/8	13/16	3/8	6400	570
BTP-4	BTP-40	1/2-13	3/4	15/16	7/16	7000	570
BTP-5	BTP-50	5/8-11	7/8	1	7/16	10000	1000
BTP-6	BTP-60	3/4-10	1-1/16	1-11/32	5/8	13500	1300
BTP-7	BTP-70	1-8	1-3/8	1-53/64	13/16	18750	1570

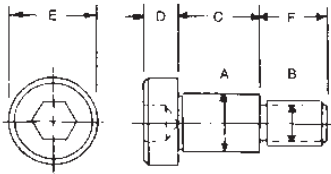
- ▶ Stainless steel
- ▶ Available with stainless steel or delrin pad
- ▶ 10 degree swivel
- ▶ Do not exceed load rating



Stainless Steel Toggle Pads

Stainless Pad PART #	Delrin Pad PART #	Thread X	B	C	E	Stainless Load	Delrin Load
BTP-1SS	BTP-10SS	1/4-20	1/2	5/8	5/16	5000	360
BTP-2SS	BTP-20SS	5/16-18	9/16	3/4	3/8	7600	360
BTP-3SS	BTP-30SS	3/8-16	5/8	13/16	3/8	8250	570
BTP-4SS	BTP-40SS	1/2-13	3/4	15/16	7/16	9000	570
BTP-5SS	BTP-50SS	5/8-11	7/8	1	7/16	12900	1000
BTP-6SS	BTP-60SS	3/4-10	1-1/16	1-11/32	5/8	17400	1300
BTP-7SS	BTP-70SS	1-8	1-3/8	1-53/64	13/16	24200	1570

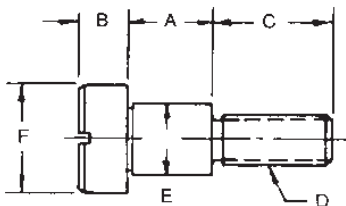
Socket Head Shoulder Screws



Low Carbon Steel PART #	Stainless Steel PART #	A	B	C	D	E	F
SHS-1	SHS-1SS	.250	10-24	1/4	3/16	3/8	3/8
SHS-2	SHS-2SS	.250	10-24	3/8	3/16	3/8	3/8
SHS-3	SHS-3SS	.250	10-24	1/2	3/16	3/8	3/8
SHS-4	SHS-4SS	.250	10-24	5/8	3/16	3/8	3/8
SHS-5	SHS-5SS	.250	10-24	3/4	3/16	3/8	3/8
SHS-6	SHS-6SS	.250	10-24	1	3/16	3/8	3/8
SHS-7	SHS-7SS	.312	1/4-20	1/4	7/32	7/16	7/16
SHS-8	SHS-8SS	.312	1/4-20	3/8	7/32	7/16	7/16
SHS-9	SHS-9SS	.312	1/4-20	1/2	7/32	7/16	7/16
SHS-10	SHS-10SS	.312	1/4-20	5/8	7/32	7/16	7/16
SHS-11	SHS-11SS	.312	1/4-20	3/4	7/32	7/16	7/16
SHS-12	SHS-12SS	.312	1/4-20	1	7/32	7/16	7/16
SHS-13	SHS-13SS	.375	5/16-18	1/4	1/4	9/16	1/2
SHS-14	SHS-14SS	.375	5/16-18	3/8	1/4	9/16	1/2
SHS-15	SHS-15SS	.375	5/16-18	1/2	1/4	9/16	1/2
SHS-16	SHS-16SS	.375	5/16-18	5/8	1/4	9/16	1/2
SHS-17	SHS-17SS	.375	5/16-18	3/4	1/4	9/16	1/2
SHS-18	SHS-18SS	.375	5/16-18	1	1/4	9/16	1/2
SHS-19	SHS-19SS	.500	3/8-16	3/8	5/16	3/4	5/8
SHS-20	SHS-20SS	.500	3/8-16	1/2	5/16	3/4	5/8
SHS-21	SHS-21SS	.500	3/8-16	5/8	5/16	3/4	5/8
SHS-22	SHS-22SS	.500	3/8-16	3/4	5/16	3/4	5/8
SHS-23	SHS-23SS	.500	3/8-16	1	5/16	3/4	5/8
SHS-24	SHS-24SS	.625	1/2-13	1/2	3/8	7/8	3/4
SHS-25	SHS-25SS	.625	1/2-13	5/8	3/8	7/8	3/4
SHS-26	SHS-26SS	.625	1/2-13	3/4	3/8	7/8	3/4
SHS-27	SHS-27SS	.625	1/2-13	1	3/8	7/8	3/4

- Available in heat treated carbon steel or stainless steel
- Black oxide finish
- "C" dimension...+.005-.000
- "A" dimension...+.000-.001

Slotted Shoulder Screws



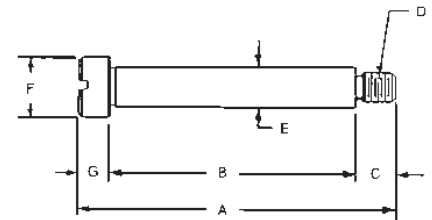
- Available in heat treated carbon steel or stainless steel
- Black oxide finish
- "A" dimension...+.005 -.000
- "E" dimension...+.000 -.001

Low Carbon Steel PART #	Stainless Steel PART #	A	B	C	D	E	F
SS-1	SS-1SS	.252	3/16	3/8	1/4-20	.374	5/8
SS-2	SS-2SS	.314	3/16	3/8	1/4-20	.374	5/8
SS-3	SS-3SS	.377	1/4	1/2	5/16-18	.499	3/4
SS-4	SS-4SS	.502	1/4	5/8	3/8-16	.499	3/4
SS-5	SS-5SS	.627	1/4	5/8	3/8-16	.499	3/4
SS-6	SS-6SS	.752	1/4	5/8	3/8-16	.499	3/4

Stainless Steel Shoulder Screws



PART #	+.005-.000			+.000-.001			
	A	B	C	D	E	F	G
9250	13/32	1/8	5/32	#4-40	1/8	1/4	1/8
9251	15/32	3/16	5/32	#4-40	1/8	1/4	1/8
9252	17/32	1/4	5/32	#4-40	1/8	1/4	1/8
9253	19/32	5/16	5/32	#4-40	1/8	1/4	1/8
9254	21/32	3/8	5/32	#4-40	1/8	1/4	1/8
9255	15/32	1/8	3/16	#8-32	3/16	5/16	5/32
9256	17/32	3/16	3/16	#8-32	3/16	5/16	5/32
9257	19/32	1/4	3/16	#8-32	3/16	5/16	5/32
9258	21/32	5/16	3/16	#8-32	3/16	5/16	5/32
9259	23/32	3/8	3/16	#8-32	3/16	5/16	5/32
9260	27/32	1/2	3/16	#8-32	3/16	5/16	5/32
9261	31/32	5/8	3/16	#8-32	3/16	5/16	5/32
9262	1-3/32	3/4	3/16	#8-32	3/16	5/16	5/32
9263	1-11/32	1	3/16	#8-32	3/16	5/16	5/32
9264	1-19/32	1-1/4	3/16	#8-32	3/16	5/16	5/32
9265	1-27/32	1-1/2	3/16	#8-32	3/16	5/16	5/32
9266	9/16	1/8	1/4	#10-32	1/4	3/8	3/16
9267	5/8	3/16	1/4	#10-32	1/4	3/8	3/16
9268	11/16	1/4	1/4	#10-32	1/4	3/8	3/16
9269	3/4	5/16	1/4	#10-32	1/4	3/8	3/16
9270	13/16	3/8	1/4	#10-32	1/4	3/8	3/16
9271	15/16	1/2	1/4	#10-32	1/4	3/8	3/16
9272	1-1/16	5/8	1/4	#10-32	1/4	3/8	3/16
9273	1-3/16	3/4	1/4	#10-32	1/4	3/8	3/16
9274	1-7/16	1	1/4	#10-32	1/4	3/8	3/16
9275	1-11/16	1-1/4	1/4	#10-32	1/4	3/8	3/16
9276	1-15/16	1-1/2	1/4	#10-32	1/4	3/8	3/16



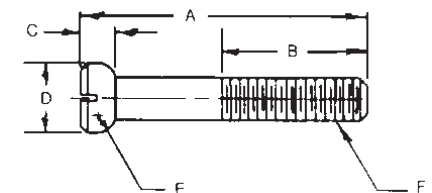
- ▶ Made from 303 stainless steel
- ▶ Slotted head

Stainless Steel Spherical Head Screws

- ▶ Made from 300 series stainless steel
- ▶ Slotted head



PART #	A	B	C	D	E	F
6208	1	5/8	3/16	3/8	1/8	#10-32
6209	1-1/4	5/8	3/16	3/8	1/8	#10-32
6210	1-1/2	3/4	3/16	3/8	1/8	#10-32
6260	1-1/4	7/8	1/4	7/16	1/8	1/4-20
6261	1-1/2	7/8	1/4	7/16	1/8	1/4-20
6262	1-3/4	7/8	1/4	7/16	1/8	1/4-20
6263	2	7/8	1/4	7/16	1/8	1/4-20
6322	1-1/2	1	1/4	1/2	1/8	5/16-18
6323	1-3/4	1	1/4	1/2	1/8	5/16-18
6324	2	1	1/4	1/2	1/8	5/16-18
6325	2-1/4	1	1/4	1/2	1/8	5/16-18
6326	2-1/2	1	1/4	1/2	1/8	5/16-18
6386	1-1/2	1-1/8	9/32	5/8	3/16	3/8-16
6387	1-3/4	1-1/8	9/32	5/8	3/16	3/8-16
6388	2	1-1/8	9/32	5/8	3/16	3/8-16
6389	2-1/4	1-1/8	9/32	5/8	3/16	3/8-16
6390	2-1/2	1-1/8	9/32	5/8	3/16	3/8-16
6391	2-3/4	1-1/8	9/32	5/8	3/16	3/8-16
6392	3	1-1/8	9/32	5/8	3/16	3/8-16





6602 Upper 28th St. N.
Oakdale, MN 55128

email: sales@idsmachine.com

651-353-6891
www.idsmachine.com
